



DIRECTIONS:

This kit includes our original Tread Doctor Knobby Cutting Tool and Sniper Kit for Custom Tire grooving.

The Sniper Kit is a #3 cutting head and 12 replacement blades that fit your Tread Doctor Knobby Tool.

Use your Tread Doctor to sharpen your knobbies

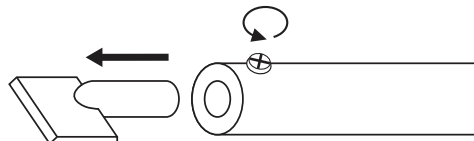
Use the Sniper Kit when you want to cut your own custom grooves and patterns in your tires.



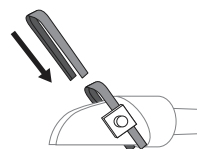
Scan this QR code with your smart phone to see video of Sniper Head cutting.

INSTALLATION:

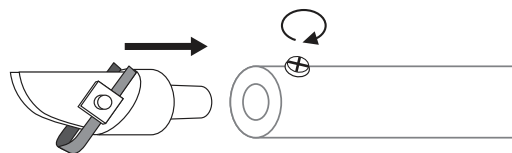
Step 1. With Tread Doctor cool use Phillips Head #2 screwdriver to remove Tread Doctor cutting blade by loosening set screw.



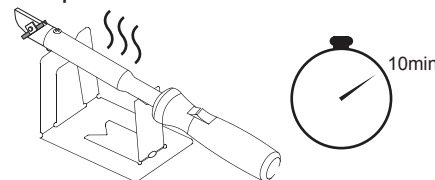
Step 2. Install cutting blade onto Cutting head. Loosen square nuts to slip blade in-between. Make sure blade is back against head.



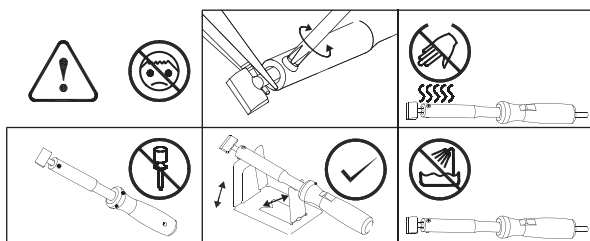
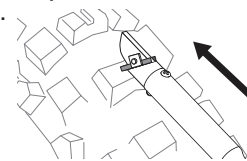
Step 3. Install Sniper Cutting Head. Tighten set screw to hold cutting head into place.



Step 4. Place Tread Doctor Sniper on stand and turn on. Let unit warm up for 10 minutes



Step 5. With unit completely warmed up place front tip of cutting head on tire and push forward. Try to keep the brass part of the tip on the tire at all times. This preheats the surface before it is cut with the the hot blade. see illustration 3.



Do you have a great product idea?
We can help bring your product to market.
Call or e-mail Hardline Products for details.



677 Cochran Street Simi Valley, CA 93065
805-581-4700 ph. 805-581-0022 fax.
sales@hardlineproducts.com
www.hardlineproducts.com

TREAD DOCTOR™

KNOBBY CUTTING TOOL

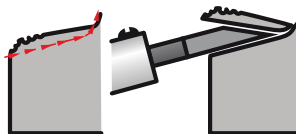
DIRECTIONS (ENGLISH) :

Step 1. Read all the instructions, Dangers & Warnings carefully before using this tool. Save this information for future reference.

Let Tread Doctor warm up for 20mins. Use Included Stand to Rest Unit On. You can trim your tire right on your M/C or ATV. Note: Unit will smoke a small amount on initial warm-up.



Step 2. Slice into worn edge of knobby and scoop Tread Doctor Kobby Cutting Tool upward as edge of blade meets the end of the knobby.



Slice off the least amount possible in order to get the most life from your tire as possible.

Repeat as necessary or after every ride. Sharpen with stone or grinding wheel.

Tread Doctor offers replacement blades for your unit, if needed. Please go to www.hardlineproducts.com/motorcycle to order.

See hardlineproducts.com/support for more info and how-to video.

DIRECTIONS (FRENCH) :

Étape 1. Lisez toutes les instructions, les dangers et mises en garde avant d'utiliser cet outil. Enregistrer ces informations pour référence future.

Laissez-Tread Docteur chauffer pendant 20 minutes. Utilisez livré avec un support to Rest appareil. Vous pouvez découper votre droite pneu sur votre M / C ou en VTT.

Remarque: L'appareil fumer une petite quantité lors de la première warm-up.

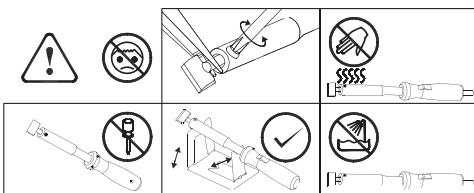
Étape 2. Trancher en bord de porter noueux et Kobby Docteur scoop Tread outil de coupe vers le haut que le bord de la lame se réunit à la fin de l'noueux.

Essayez de découper le caoutchouc peu que possible de faire un bord carré, votre pneu durera encore plus longtemps. La pratique rend parfait!

Répéter au besoin ou après chaque randonnée.

Docteur bande de roulement offre lames de rechange pour votre appareil si nécessaire. cliquez sur [hardlineproducts.com / moto](http://hardlineproducts.com/moto) pour commander

Voir hardlineproducts.com/support pour plus d'info et comment à la vidéo.



Do you have a great product idea? We can help bring your product to market. Call or e-mail Hardline Products for details.

677 Cochran Street Simi Valley, CA 93065
805-581-4700 ph. 805-581-0022 fax.
sales@hardlineproducts.com
www.hardlineproducts.com